

TREND  
COLLECTION  
S/S 2013

ARCHITECTURAL KNITS



**STOLL**  
THE RIGHT WAY TO KNIT



## ARCHITECTURAL KNIT

FROM ANCIENT TIMES, THE LANGUAGE OF ARCHITECTURE HAS INSPIRED FASHION DESIGNERS, AND ITS INFLUENCE IS STILL STRONGLY FELT TODAY.

FASHION AND ARCHITECTURE ARE MOST STRONGLY LINKED IN CONSTRUCTION. BOTH CREATE DESIGNS FROM THE COMBINATION OF AREAS, FORMS, MATERIALS, SURFACES, AND TEXTURES. BOTH CHARACTERISTICALLY USE PLAIN EDGES, PLEATS, AND CURVES.

PIERRE BALMAIN (1914-1982) ONCE SAID, 'DRESSMAKING IS THE ARCHITECTURE OF MOVEMENT', AND THE CREATIONS OF MANY DESIGNERS CONTAIN REFERENCES TO BUILDINGS AND ARCHITECTURAL CONCEPTS. THE ARCHITECTURE OF FASHION IS ALMOST SCULPTURAL AND CLEARLY DELIBERATE.

OUR SPRING/SUMMER 2013 TREND COLLECTION UNVEILS NEW POSSIBILITIES TO INCORPORATE EDGES, PLEATS, FOLDINGS, AND PLISSÉ EFFECTS INTO KNITWEAR. THE SOFTNESS USUALLY ASSOCIATED WITH KNITWEAR IS NOW TRANSLATED INTO A SHARP, SEVERE CHIC.

THE DOUBLE JERSEY TECHNIQUE IN ITS MANY DIFFERENT FACETS IS THE SOURCE OF OUR NEW STRUCTURES; THIS TECHNIQUE IN NO WAY RESTRICTS THE PROCESS OF DEVELOPMENT, BUT RATHER ENABLES IT TO REFLECT THE WIDE SPECTRUM OF KNITTING TECHNOLOGIES.

THE COLOURS OF THE COLLECTION INTERPRET THE MATERIALS OF MODERNISM AND ITS CAPRICIOUS APPEARANCE: GREY CONCRETE TURNS INTO BEIGE WHEN IMMERSSED IN SUNLIGHT, WHILE THE REFLECTIONS OF THE BLUE-GREY SKY ON COOL GLASS LIGHTEN OTHER AREAS. THIS INTERACTION OF LIGHT AND SHADOW EMERGING FROM WITHIN THE FOLDS IS THE BASIS OF OUR 'SUMMERDARKS'.

MATTE AND GLOSSY YARNS GIVE CONTRASTS LIKE STONE AND METAL SURFACES, AND THE USE OF LINEAR YARNS MAKES IT POSSIBLE TO REALIZE NEAT, CLEAR EDGES.

THE RESULTING SILHOUETTES SHOW CLEAR, STRONG, AND CLASSIC LINES IN A LANGUAGE OF MASCULINE FORM: THE 'URBAN FICTION' OF ANCIENT TIMES. THIS MAY INSPIRE COLLECTIONS WHOSE INTENTION IS TO BE MODERN. HOWEVER, THESE ORNAMENTAL DESIGNS BEGIN, NOT WITH INTENSE TECHNICAL STITCH DEVELOPMENT, BUT WITH A VOLUME OF EMPTY SPACE.

IN THAT SPACE, WE CONCENTRATE ON THE ESSENTIAL: A TAILORING FREED FROM SUCH TECHNIQUES AS DRAPING AND SEWING. WE STEP FORWARD IN THE DIRECTION OF COUTURE IN ITS PUREST FORM.











**11110204** (TOP SEE PAGE 11)

**11110330 CMS 530 HP MULTI GAUGE – E 7.2**  
PLATED JERSEY FULLY FASHION TROUSERS WITH LAYERED PURL PLISSÉ PLEATS IN THE FRONT AND KNITTED ON WAISTBAND



**1110378 CMS 530 HP MULTI GAUGE – E 7.2**  
FULLY FASHION V-NECK SLIP OVER IN 1x1 TUCK RIB, V-STRIPE MOTIF IN ALL NEEDLE KNIT AND WITH NEEDLE SET OUT IN RACKED AND TUCKED PATTERN, FACE TURNED INSIDE OUT



**11110204 CMS 530 HP MULTI GAUGE – E 7.2**

STOLL-APPLICATIONS®, STOLL-MULTI GAUGES®  
FULLY FASHION JERSEY TOP WITH KNITTED ON DIAGONAL STRUCTURE APPLICATIONS, PLEATS ARE SHAPED BY GORE TECHNIQUE AND FOLDED OVER THE TOP







**1110343 CMS 530 HP MULTI GAUGE – E 7.2**

PULLOVER WITH CUT AND SEW BODY AND FULLY FASHION SLEEVES IN JERSEY STRUCTURE, TUBULAR INTARSIA PLEATS WITH 3-LAYER TECHNOLOGY, PARTLY SET IN DIAGONAL BY GORING, WAVES MADE BY HOLDING STITCHES







**1110367 CMS 530 HP MULTI GAUGE - E 7.2**

FULLY FASHION INTARSIA DRESS WITH BUST DARTS IN GORE TECHNIQUE, DOUBLE JERSEY STRUCTURE WITH NEEDLE SET OUT AND STITCH DOUBLING CREATING BOX PLEATS WITH TRIANGLE PLEATS IN THE BACK, FACE TURNED INSIDE OUT



**1110369 CMS 530 HP MULTI GAUGE – E 7.2**

FULLY FASHION CHARLESTON DRESS IN DOUBLE JERSEY STRUCTURE WITH NEEDLE SET OUT AND KNITTED ON SKIRT WITH BOX PLEATS AND INVERTED TRIANGLE PLEATS AROUND THE HEM, FACE TURNED INSIDE OUT



**1110329 CMS 530 HP MULTI GAUGE – E 8.2**  
FULLY FASHION DRESS, TOP PART WITH ARGYLE INTARSIA PATTERN IN JERSEY, KNITTED ON SKIRT IN DOUBLE JERSEY WITH NEEDLE SET OUT AND BOX PLEATS,  
31 YARN CARRIERS IN THE FRONT AND 27 YARN CARRIERS IN THE BACK



**1110255 CMS 530 HP MULTI GAUGE – E 7.2**  
SLEEVELESS FULLY FASHION EMPIRE DRESS, MADE UP ACROSS THE KNITTING DIRECTION WITH FRONT BOX PLEAT, SKIRT PART IN DOUBLE JERSEY WITH GORING AND HOLDING STITCHES, TOP PART WITH KNITTED ON RIBBON FOR DIFFERENT DRAPINGS







**1110206 CMS 530 HP MULTI GAUGE – E 7.2**  
FULLY FASHION DRESS, SKIRT PART WITH BINDED OFF PLISSÉ PLEATS ACHIEVED BY STITCH DOUBLING (IN 2 ENDS), TOP PART WITH LAPEL KNIT TO  
FADE OUT INTO THE BODY WITH BIND-OFF TECHNIQUE (IN 3 ENDS)



**11110231 CMS 530 HP MULTI GAUGE – E 7.2**  
FULLY FASHION HALTER-NECK BIKINI IN 1x1 HALF TUBULAR SHAPED BY GORE TECHNIQUE, BREAST PART FORMED BY PLEATS IN JERSEY TUCK STITCH STRUCTURE,  
INTARSIA TUBULAR EDGES WITH ELASTIC THREAD











**1110368 CMS 530 HP MULTI GAUGE - E 7.2**  
FULLY FASHION V-NECK PULLOVER IN 1x1 TUCK RIB, TRIANGLE MOTIF IN ALL NEEDLE KNIT AND WITH NEEDLE SET OUT IN RACKED AND TUCKED PATTERN, FACE TURNED INSIDE OUT

**1110172 CMS 530 HP MULTI GAUGE – E 7.2**

STOLL-MULTI GAUGES®

SHORT-SLEEVED JERSEY WRAP-AROUND CARDIGAN SHAPED BY GORE TECHNIQUE WITH POINTELLE STRUCTURE STRIPES AND KNITTED ON TRIMS AND WAISTBAND, KNITTED IN ONE PIECE, FACE TURNED INSIDE OUT, SIDE SEAMS ARE LINKED

**1110331 CMS 530 HP MULTI GAUGE – E 7.2**

PLATED JERSEY FULLY FASHION PANT SKIRT WITH LAYERED PURL PLISSÉ PLEATS IN THE FRONT AND BACK, KNITTED ON WAISTBAND





**1110338 CMS 530 HP MULTI GAUGE – E 7.2**  
FULLY FASHION VEST WITH ZIPPER IN RACKED DOUBLE TUCK STITCH PATTERN, SHOULDER YOKE AND INSET POCKETS IN RACKED HALF CARDIGAN STITCH

**1110203 CMS 530 HP MULTI GAUGE – E 3,5.2**

STOLL-MULTI GAUGES®

FULLY FASHION JERSEY TOP WITH DROP SHOULDER, OVERLAPS AT CENTRE ACHIEVED BY RACKING BOTH YARNS, FRONT OPENING TO A V-NECK THAT WRAPS AROUND THE BACK OF THE NECK, DIAGONAL RUNNING STITCHES BY TRANSFER

**1110250 CMS 530 HP MULTI GAUGE – E 7.2**

SKIRT IN DOUBLE JERSEY WITH RHOMBIC PATTERN ACHIEVED BY DIAGONAL HOLDING STITCHES AND PLEATS BY NEEDLE SET OUT, WAISTBAND NARROWED BY STITCH DOUBLING IN JERSEY INTERLOCK



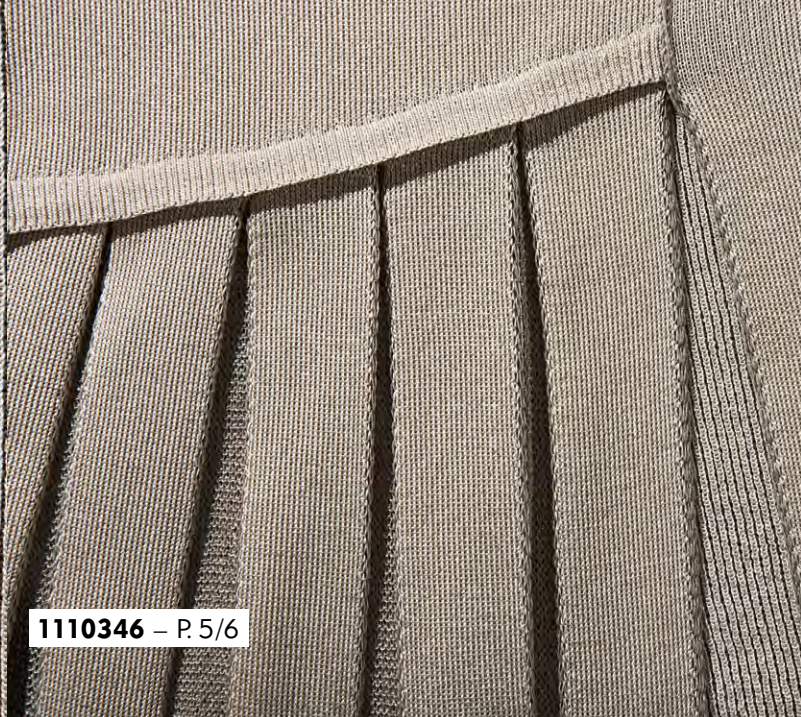




**1110294 CMS 530 HP MULTI GAUGE – E 8.2**  
FULLY FASHION DRESS, MADE UP ACROSS THE KNITTING DIRECTION, IN GORED HALF TUBULAR STRUCTURE WITH JERSEY STRIPES



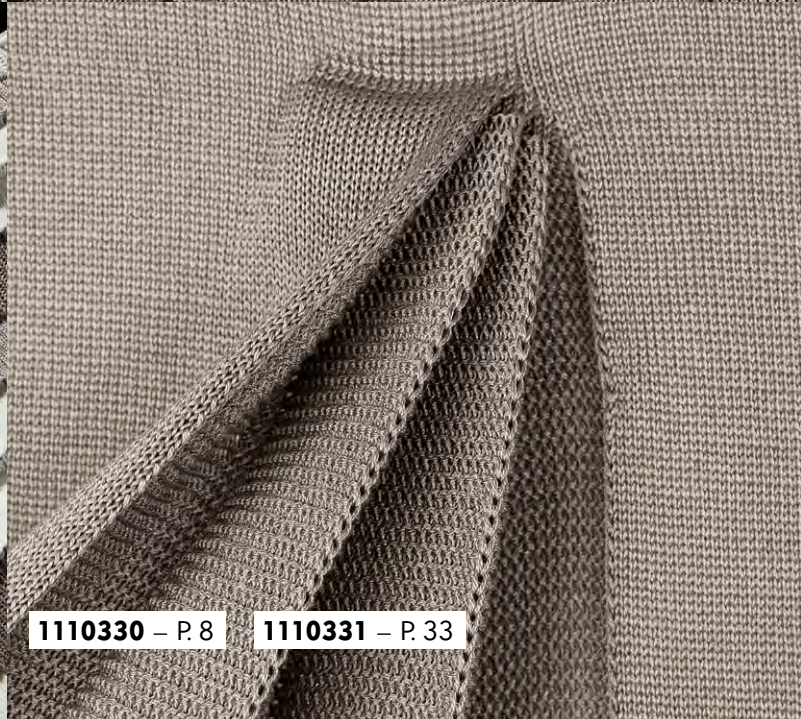
1110346 – P. 5/6



1110346 – P. 5/6



1110204 – P. 8/11

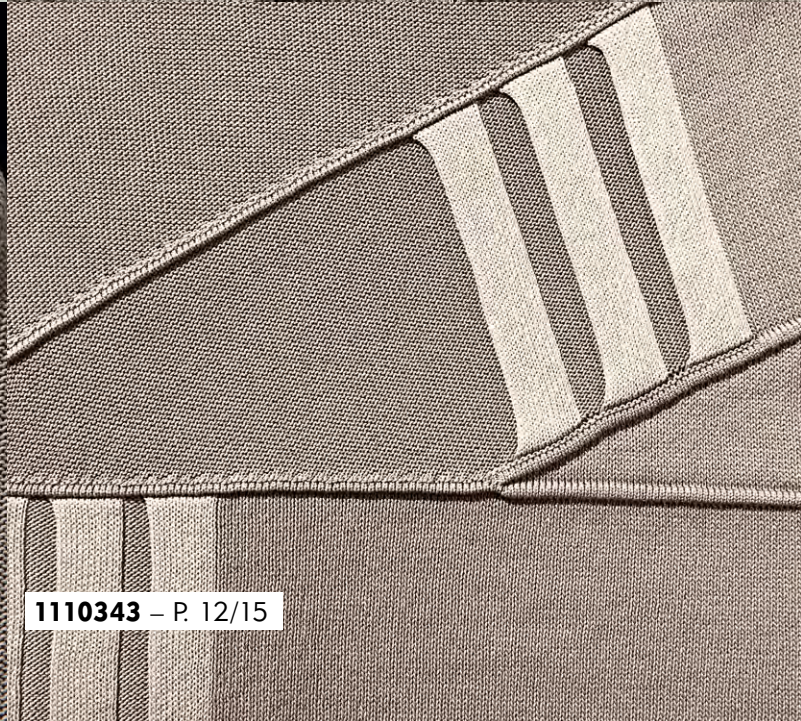


1110330 – P. 8

1110331 – P. 33



1110343 – P. 12/15



1110343 – P. 12/15



1110206 – P. 26/27

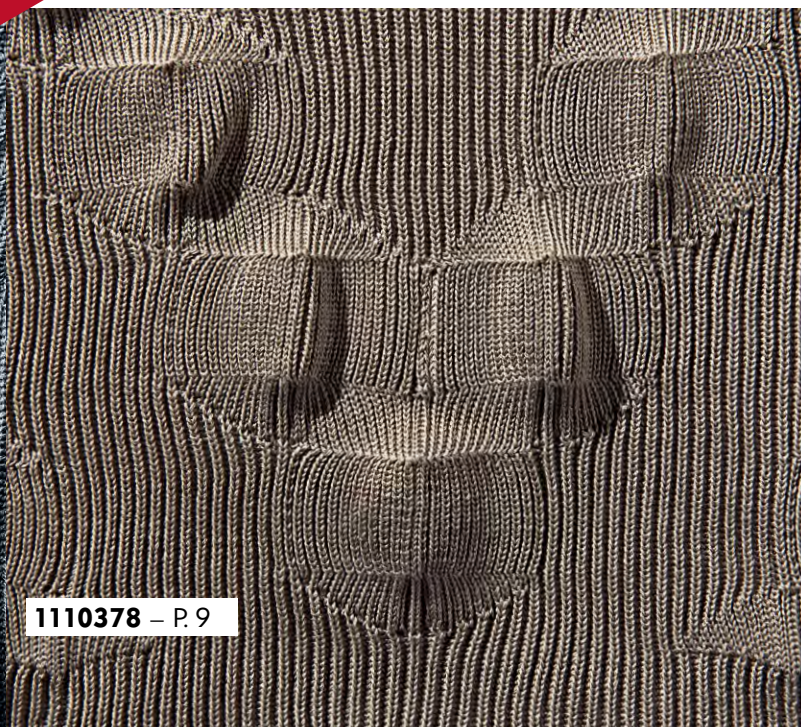


1110206 – P. 26/27

# DE TA ILS



1110368 – P. 32



1110378 – P. 9



1110329 - P. 19



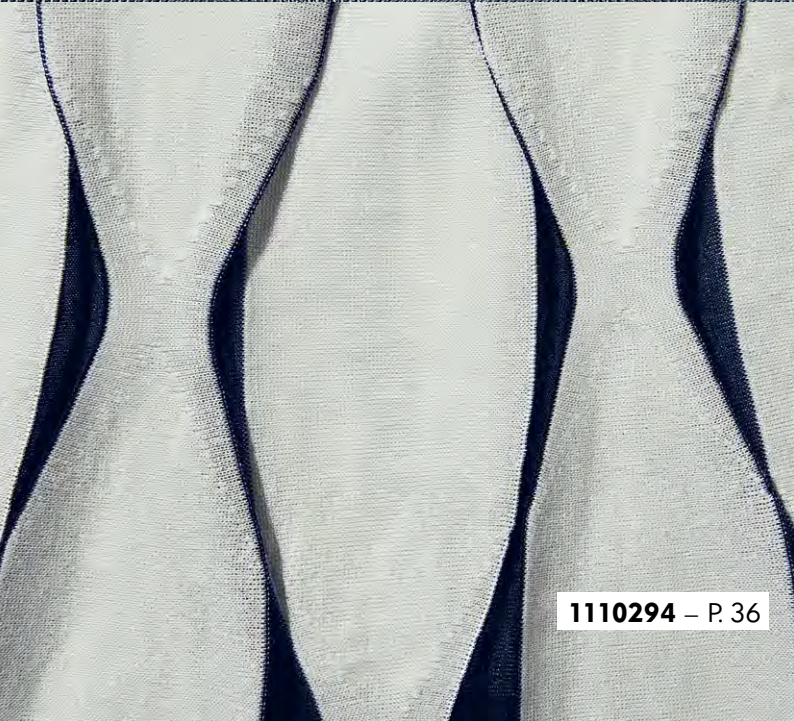
1110369 - P. 17



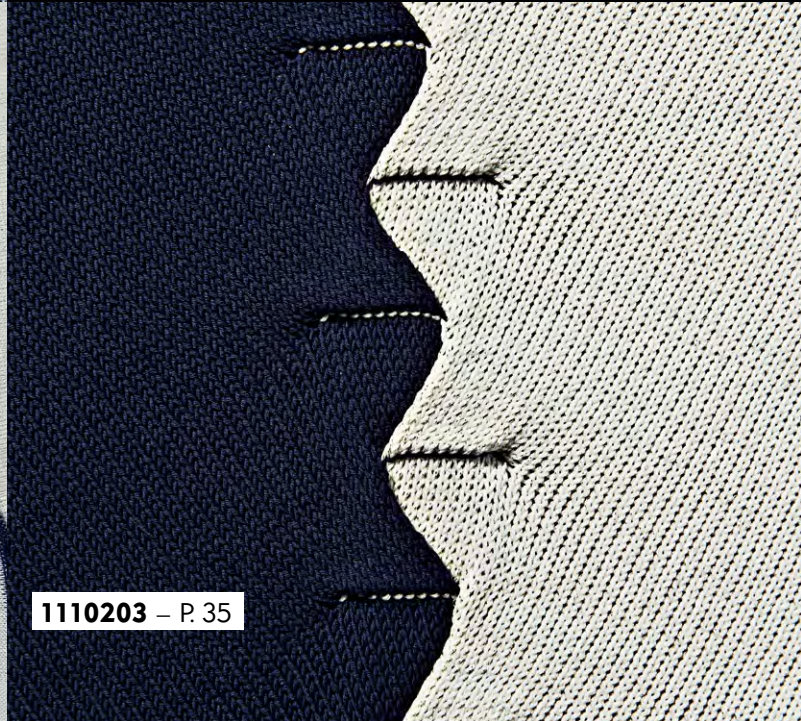
1110338 - P. 34



1110338 - P. 34



1110294 - P. 36



1110203 - P. 35



**1110255** - P. 20/25



**1110376** - P. 16



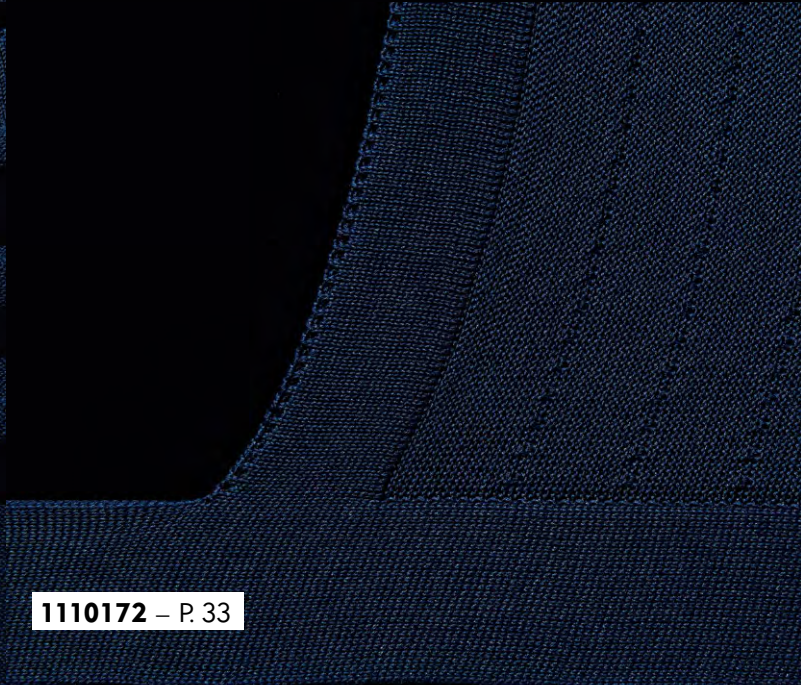
**1110250** - P. 35



**1110231** - P. 29/31



**1110172** - P. 33



**1110172** - P. 33

# YARN DETAILS

PAGE	NUMBER	YARN DETAILS
5/6	1110346	FILMAR: TIFFANY, NM 16,5 (54% VI, 46% CO) SESIA: GLACÉ, NM 67 (70% CO, 30% PES)
8/10	1110204	EMILCOTONI: SUVIN HT, NM 90/3 (100% CO) GRIGNASCO: DESERT, NM 40 (100% CO) WGF: COLCOTON, NM 70/2 (100% CO) IGEA: FOGLIA, NM 24 (58% VI, 42% CO)
8	1110330	WGF: COLCOTON, NM 70/2 (100% CO)
9	1110378	SESIA: GLACÉ, NM 67 (70% CO, 30% PES) WGF: COLCOTON, NM 70/2 (100% CO) ZIMMERMANN: 4495X (94% PA, 6% EA)
12/15	1110343	FILMAR: PERLE MICRO, NM 7 (100% CO) FILMAR: TIFFANY, NM 16,5 (54% VI, 46% CO)
16	1110367	WGF: COLCOTON, NM 70/2 (100% CO) FILPUCCI: VISCREPE, NM 30 (100% VI)
17	1110369	FILMAR: TIFFANY, NM 16,5 (54% VI, 46% CO) FILPUCCI: VISCREPE, NM 30 (100% VI)
19	1110329	FILMAR: TIFFANY, NM 16,5 (54% VI, 46% CO)
20/25	1110255	WGF: COLCOTON, NM 100/2 (100% CO)
26/27	1110206	WGF: COLCOTON, NM 70/2 (100% CO)
29/30	1110231	WGF: COLCOTON, NM 70/2 (100% CO) ZIMMERMANN, 3772X (83% PA, 17% EA)
32	1110368	WGF: COLCOTON, NM 70/2 (100% CO) ZIMMERMANN: 4495X (94% PA, 6% EA)
33	1110172	EMILCOTONI: SUVIN HT, NM 90/3 (100% CO)
	1110331	WGF: COLCOTON, NM 70/2 (100% CO) SESIA: GLACÉ, NM 67 (70% CO, 30% PES)
34	1110338	WGF: COLCOTON, NM 70/2 (100% CO)
35	1110203	LINEAPIÙ: JAZZ, NM 3,8 (96% CO, 4% PBT) LINEAPIÙ: IMAGE, NM 46 (80% VI, 20% PES)
	1110250	EMILCOTONI: SUVIN HT, NM 90/3 (100% CO)
	1110294	IGEA: FOGLIA, NM 24 (58% VI, 42% CO) WGF: COLCOTON, NM 70/2 (100% CO)

## STOLL HEADQUARTERS

### GERMANY

H. STOLL GMBH & CO. KG  
STOLLWEG 1 – 72760 REUTLINGEN  
T: +49 (0)71213130 – F: +49 (0)7121313110  
CONTACT@STOLL.COM – WWW.STOLL.COM

## STOLL FASHION & TECHNOLOGY

### STOLL FASHION & TECHNOLOGY GERMANY

H. STOLL GMBH & CO. KG  
STOLLWEG 1 – 72760 REUTLINGEN  
T: +49 (0)71213130 – F: +49 (0)7121313426  
CONTACT@STOLL.COM – WWW.STOLL.COM

### STOLL FASHION & TECHNOLOGY CENTER NEW YORK

250 WEST 39TH STREET (GROUND FLOOR) – NEW YORK, NY 10018  
T: +1 2123983869 – F: +1 2129217639  
INFO@STOLLFTNY.COM – WWW.STOLLFTNY.COM

# ADDRESSES

## STOLL BRANCHES & AGENCIES

### FRANCE

STOLL FRANCE  
85-87, AVENUE HENRI BARBUSSE – 92140 CLAMART  
T: +33 141088383 – F: +33 141088500  
STOLLFRANCE@WANADOO.FR

### ITALY

STOLL ITALIA SRL  
VIA DEI MANISCALCHI 9/A – 41012 CARPI (MO)  
T: +39 059651899 – F: +39 059651870  
STOLLITALIA@STOLL.IT

### USA – CANADA

STOLL AMERICA KNITTING MACHINERY, INC.  
250 WEST 39TH STREET (GROUND FLOOR) – NEW YORK, NY 10018  
T: +1 2123983869 – F: +1 2129217639  
INFO@STOLLFTNY.COM

### JAPAN

STOLL JAPAN CO. LTD.  
9F AQUACITY SHIBAURA – 4-16-23 SHIBAURA, MINATO-KU  
TOKYO 108-0023 – JAPAN  
T: +81 337693690 – F: +81 337693694  
INFO@STOLLJAPAN.JP

### INDIA

STOLL INDIA PVT. LTD.  
C-25 – SECTOR 63, 201301 NOIDA – UTTAR PRADESH  
T: +91 1204690850 – F: +91 1204690851  
CONTACT@STOLL-INDIA.COM

### CHINA – HONGKONG – TAIWAN – THAILAND – VIETNAM

CHEMTAX (STOLL) COMPANY LIMITED  
6/F, GOLDSLAND BUILDING, 22-26 MINDEN AVENUE – TSIM SHA TSUI  
KOWLOON – HONG KONG  
T: +852 23686269 – F: +852 23687500  
STOLL@CHEMTAX.COM

## YARN MANUFACTURERS

### EMILCOTONI S.P.A.

VIALE DELL'INDUSTRIA 12 – 29100 PIACENZA (PC) – ITALY  
T: +39 0523606913 – F: +39 0523608054  
INFO@EMILCOTONI.IT – WWW.EMILCOTONI.IT

### FILMAR S.P.A.

VIA DE GASPERI 65 – 25030 ZOCCO D'ERBUSCO (BS) – ITALY  
T: +39 030776700 – F: +39 0307760123  
FILMAR@FILMAR.IT – WWW.FILMAR.IT

### FILPUCCI S.P.A.

VIA DEI TIGLI 41 – 50010 CAPALLE (FI) – ITALY  
T: +39 05589871 – F: +39 0558969382  
FILPUCCI@FILPUCCI.IT – WWW.FILPUCCI.IT

### IGEA S.P.A.

VIA POLLATIVE 119 – 59100 PRATO (FI) – ITALY  
T: +39 057451811 – F: +39 0574621749  
IGEA@IGEAYARN.IT – WWW.IGEAYARN.IT

### LINEAPIÙ S.P.A.

VIA GOBETTI 12 – 50010 CAPALLE (FI) – ITALY  
T: +39 05589561 – F: +39 0558956568  
GRUPPOLINEAPIU@LINEAPIU.COM – WWW.LINEAPIU.COM

### MANIFATTURA SESIA S.R.L.

VIA TOSALLI 67/69 – 28073 FARA NOVARESE (NO) – ITALY  
T: +39 0321819984 – F: +39 0321819985  
SALES@MANSESIA.IT – WWW.MANSESIA.IT

### WGF - COLCOTON GMBH

AM WUPPERSTOLLEN 2 – 42399 WUPPERTAL – GERMANY

### W. ZIMMERMANN GMBH & CO. KG

RIEDERSTRASSE 7 – 88171 WEILER-SIMMERBERG – GERMANY  
T: +49 (0)838792120 – F: +49 (0)8387921242  
INFO@ZIMSI.COM – WWW.ZIMMERMANN-GARNE.DE

### BITZER+SINGLE GMBH

KOHLPLATTENSTRASSE 5 – 72459 ALBSTADT-LAUTLINGEN – GERMANY  
T: + 49 (0)743195800 – F: +49 (0)7431958088  
INFO@BITZER-SINGLE.DE – WWW.BITZER-SINGLE.DE

### TEXTIL REHM

VON WIELAND STRASSE 3 – 86643 RENNERTSHOFEN – GERMANY  
T/F: +49 (0)84341500



EDITORIAL DEPARTMENT: FASHION & TECHNOLOGY  
ART DIRECTION & GRAPHIC DESIGN: SSAWSTUDIO.DE  
PHOTOGRAPHY: RAFAELKROETZ.DE  
HAIR & MAKEUP: RAHELTAEBERT.COM  
MODELS: ILVA HEITMANN (PLACE MODELS), RAMON VON ROON (VIVA MODELS)  
© 2012 STOLL GMBH & CO. KG

